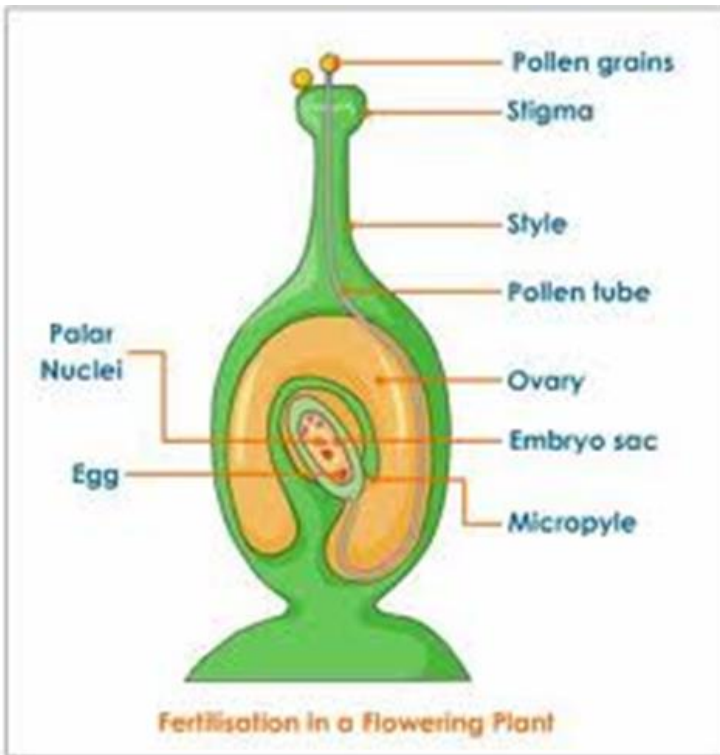


Plant Fertilisation



In each pollen grain is a male pollen nucleus.
Inside each ovule is a female ovule nucleus.
Once it is fertilised, the ovule grows a seed.

After fertilisation most parts of the flower, wither and die.
The ovary gets bigger and forms the fruit.
Inside the fruit are the seeds.

Flower

Female

Seed

Male

Fertilised Ovary

Seeds

1.

Tube Grows out of the pollen grain and down through the style

2.

Pollen nucleus moves through the tube

3.

Pollen nucleus joins with ovule nucleus. Fertilisation takes place and a seed will form.

