

# Fractions

1. What fraction of these pizzas has been eaten? Write your answer in words or fraction numerals.

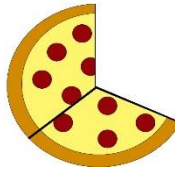
a.



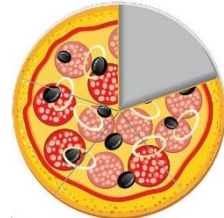
b.



c.



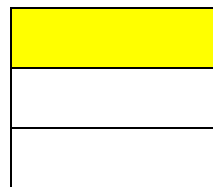
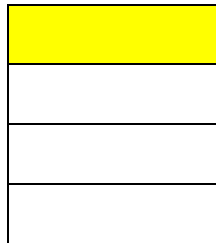
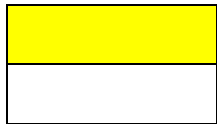
d.



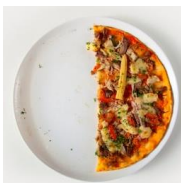
**one half  $1/2$    one quarter  $1/4$    one third  $1/3$    one fifth  $1/5$**

2. What fraction of these shapes is **NOT** shaded yellow?

a. **one half  $1/2$**    b. **3 quarters  $3/4$**    c. **2 thirds  $2/3$**    d. **4 fifths  $4/5$**



3. What fraction of the pizza is left over?



**one half  $1/2$**

4. What fraction of this pizza is left over?



**three quarters  $3/4$**

5. What fraction of the pizza is left over?



**two thirds  $2/3$**