



Subject: Grade 6 Natural Sciences
Topic: Electrical conductors and insulators
Total: 21 Marks

Name: _____

Date: _____

This image refers to question: 1



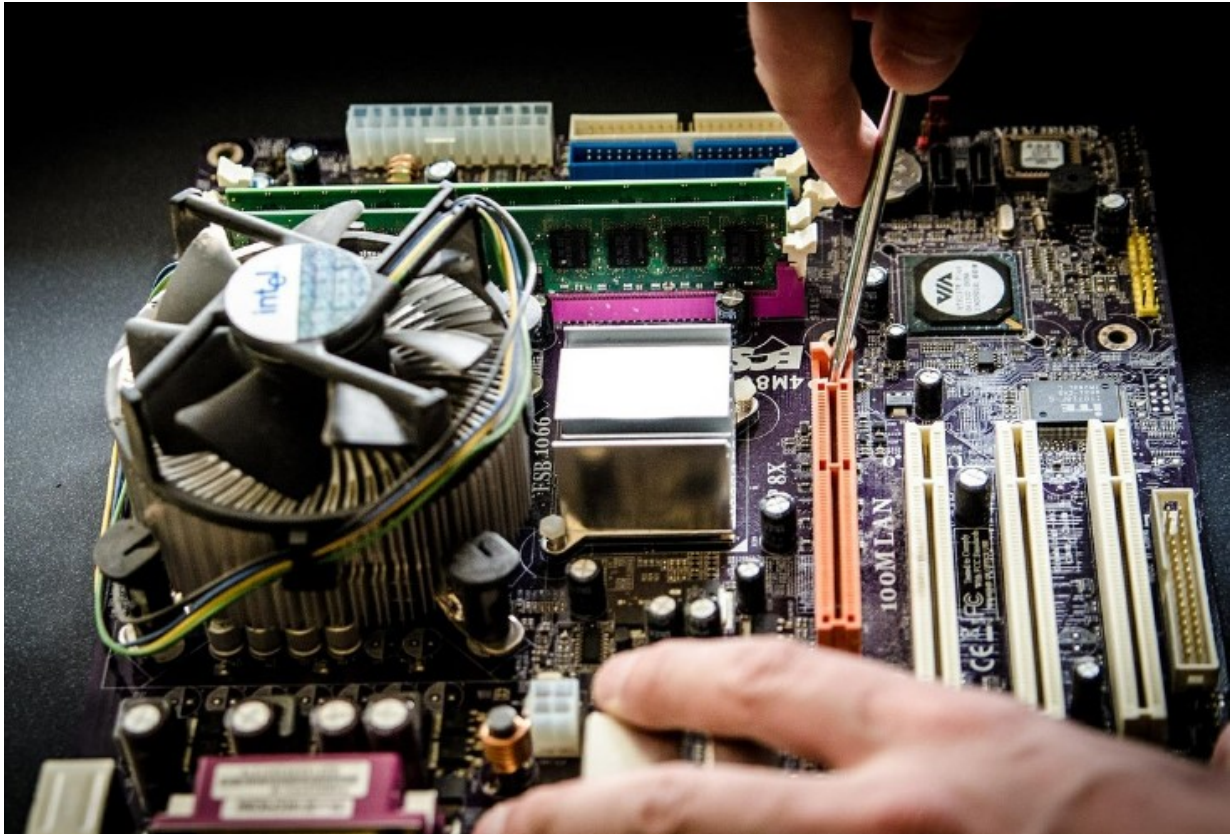
Question 1: Text Input

3 marks

Transmission lines are attached to pylons by ... that are made by ceramic material or toughened glass.

Give your answer as **one word** only, and remember that it must be in the plural form.

This image refers to question: 2



Question 2: True/False

2 marks

Metals such as copper are used to make small circuits in appliances such as computers.

TRUE

FALSE

Question 3: Please Fill In The Blanks

4 marks

Refer to the list below, and give your answers in **alphabetical order**.

The two materials, (1) and (2) are better electrical conductors than insulators.

- A. Glass
- B. Aluminium
- C. Plastic
- D. Wet skin

Possible Answers: A | B | C | D

1

2

Question 4: Multiple Choice

4 marks

Electricians use rubber gloves when they work on electrical wires. This is because the gloves are

- | | |
|----------|------------|
| A | isolators |
| B | conductors |
| C | insulators |
| D | warm |
-

Question 5: Please Fill In The Blanks

4 marks

(1) compete against electrical currents and make (2) conductors.

Possible Answers: conductors | poor | good | Insulators | Wires

1		2	
----------	--	----------	--

Question 6: Multiple Choice

4 marks

What material is the best example of a conductor?

- | | |
|----------|---------|
| A | glass |
| B | copper |
| C | plastic |
| D | wood |

Total: 21 Marks